

CHINAFORE



Address

Add: No.499 Hongcan Road, Hongken Xiaoshan District, Hangzhou, China

Factory: No. 4555, Hongye Road, Xiaoshun Town, Jindong District, Jinhua City, Zhejiang Province



Telephone

Contact: 0086-571-81603539

whatsapp: 0086 15157112235

Wechat: chinafore
refcenter



Websites

website: www.chinafore.com

www.refcenter.cn

Email: chinafore@chinafore.com



© 2024 ALL RIGHTS RESERVED.



CHINAFORE

Refcenter[®]

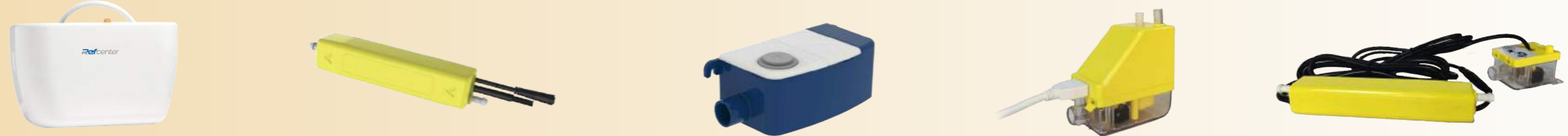
Condensate
Management



01
TRANQUIL >>



04
MUTE >>



09
BOX >>



12
MPC & MAX & PC >>



14
TANK >>



15
CONDENSATE SWITCH >>



16 Pump ancillaries

18 Tubing

19 Bracket & Floor Support

25 Vibration isolators

28 Tape

29 Pre-installation Box

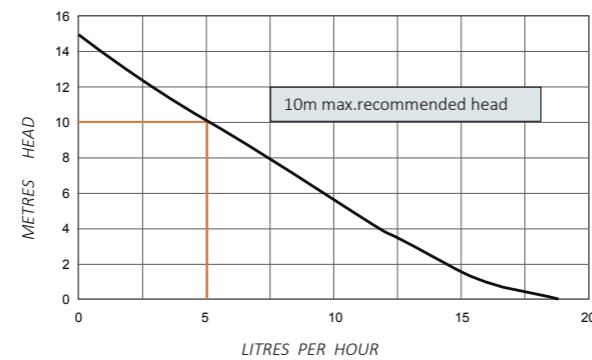
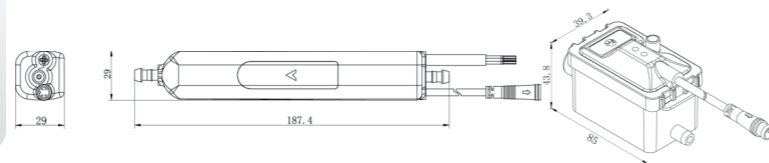
31 Slim Duct

35 Vacuum Pump & Recovery Machine



TRANQUIL-I

- Max.flow 18L/H , range from 12-18L/H
- Noise 17-19dB(A)@1m
- MAX. head 12 M

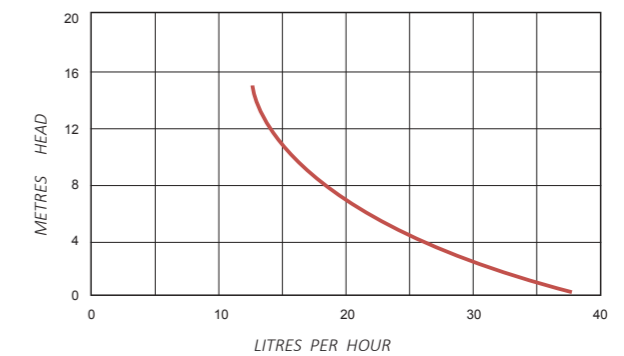
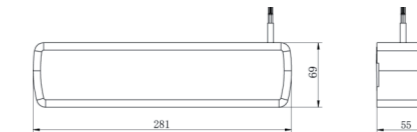


Technical Data	
Power supply	100-240V AC 50/60 Hz < 4W
Max. suction lift	2m
Max.unit output:	16kw / 54,600Btu/h
Max.water temperature	40 C
Discharge tube	6mmID
Class	II appliance
Protection	Fully potted, IP-45



TRANQUIL-X

- Max.flow 40L/H , range from 20-40L/H
- Noise 17-19dB(A)@1m
- MAX. head 20 M

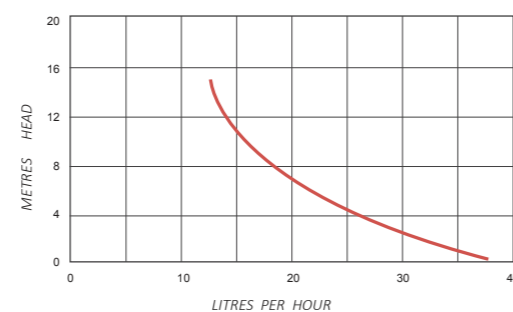
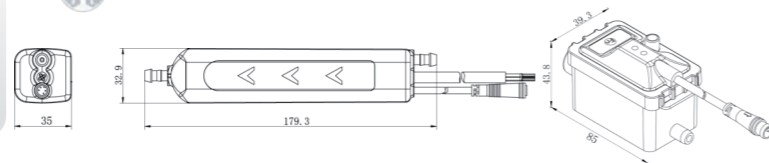


Technical Data	
Power supply	100-240V AC 50/60 Hz < 4W
Max. suction lift	2m
Max.unit output:	46kw / 157,000Btu/h
Max.water temperature	40 C
Discharge tube	6mmID
Class	II appliance
Protection	Fully potted, IP-45



TRANQUIL-S

- Max.flow 40L/H , range from 20-40L/H
- Noise 17-19dB(A)@1m
- MAX. head 20 M

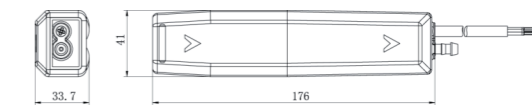


Technical Data	
Power supply	100-240V AC 50/60 Hz < 4W
Max. suction lift	2m
Max.unit output:	46kw / 157,000Btu/h
Max.water temperature	40 C
Discharge tube	6mmID
Class	II appliance
Protection	Fully potted, IP-45

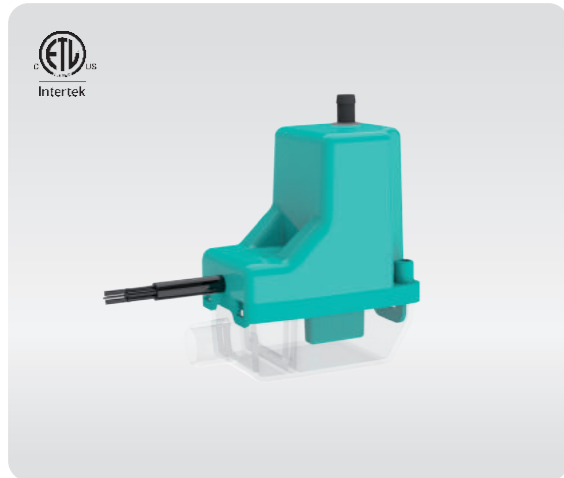


TRANQUIL-D

- Max.flow 40L/h
- Sound level <19 dB(A) @ 1m
- Max head 20m

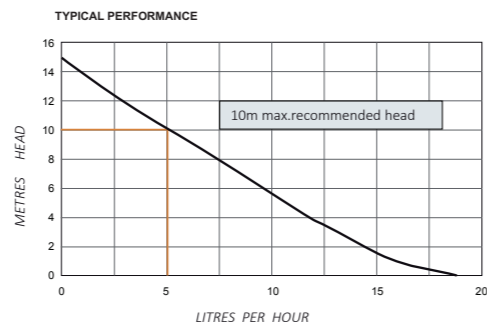
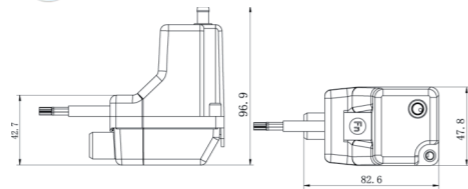


Technical Data	
Power supply	100-240V AC 50/60Hz
Max.unit output	46kw / 157,000Btu/h
Max.water temperature	70°C
Discharge tube	6mmID
Class	II appliance
Protection	Fully potted, IP-68
Start method	Soft start

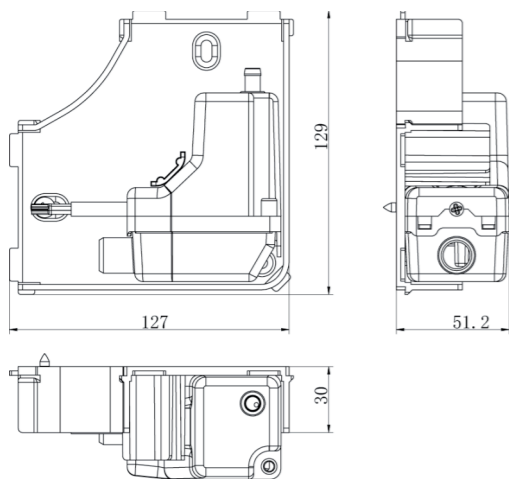


TRANQUIL-C

- Max.flow 18L/H , range from 12-18L/H
- Noise 17-19dB(A)@1m
- MAX. head 12 M



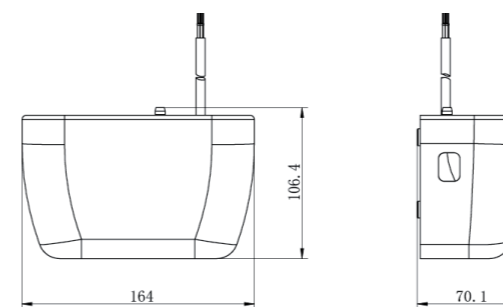
Technical Data	
Power supply	100-240V AC 50/60 Hz < 4W
Max. suction lift	2m
Max.unit output:	16kw / 54,600Btu/h
Max.water temperature	40 °C
Discharge tube	6mmID
Class	II appliance
Protection	Fully potted, IP-45



MUTE WEDGE-40

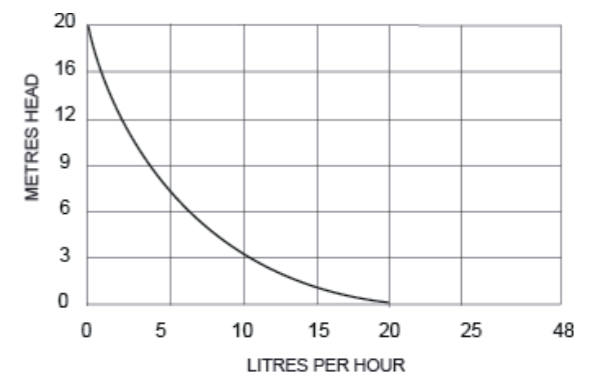
- Max.flow 40L/h @ 0 head
- Sound level <19 dB(A) @ 1m
- Max head 20m
- Max.unit output 46kw / 157,000Btu/h

Technical Data	
Power supply	100-240V AC 50/60Hz
Max.water temperature	70°C
Discharge tube	6mmID
Class	II appliance
Safety switch	3A Normally closed
Tank capacity	230ml
Rated	Continuous
Fully potted	✓



MUTE WEDGE-20

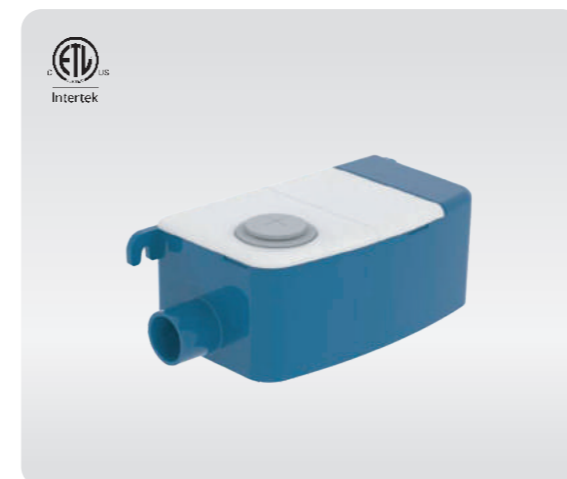
- Max.flow 20L/h @ 0 head
- Sound level <19 dB(A) @ 1m
- Max head 20m
- Max.unit output 28kw / 95,550Btu/h





MUTE BOX-40

- Max.flow 40L/h @ 0 head
- Sound level <19 dB(A) @ 1m
- Max head 20m
- Max.unit output 46kw / 157,000Btu/h



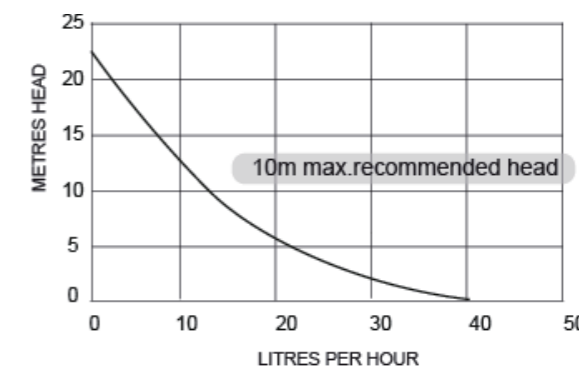
MUTE TANK-40

- Max.flow 40L/h @ 0 head
- Sound level <19 dB(A) @ 1m
- Max head 20m
- Max.unit output 46kw / 157,000Btu/h

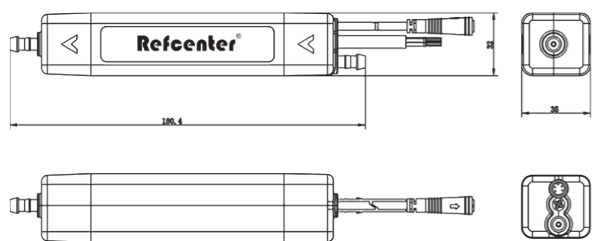
Technical Data	
Power supply	100-240V AC 50/60Hz
Max.suction lift	2m
Max.water temperature	70°C
Discharge tube	6mmID
Class	II appliance
Safety switch	3A Normally closed
Tank capacity	40ml
Rated	Continuous
Fully potted	√



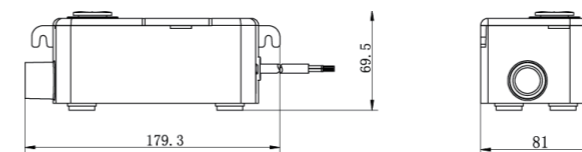
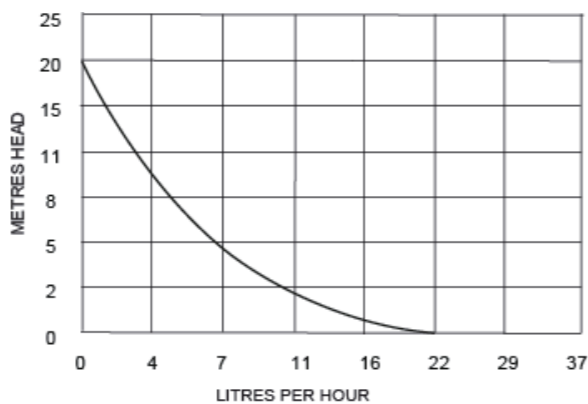
Technical Data	
Power supply	100-240V AC 50/60Hz
Max.water temperature	70°C
Discharge tube	6mmID
Class	II appliance
Safety switch	5A Normally closed
Tank capacity	260ml
Rated	Continuous
Fully potted	√



MUTE BOX-20

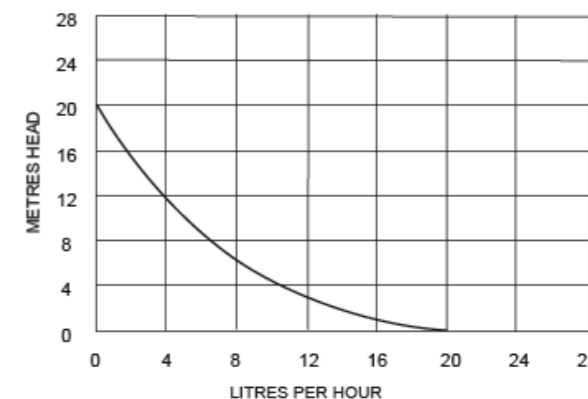


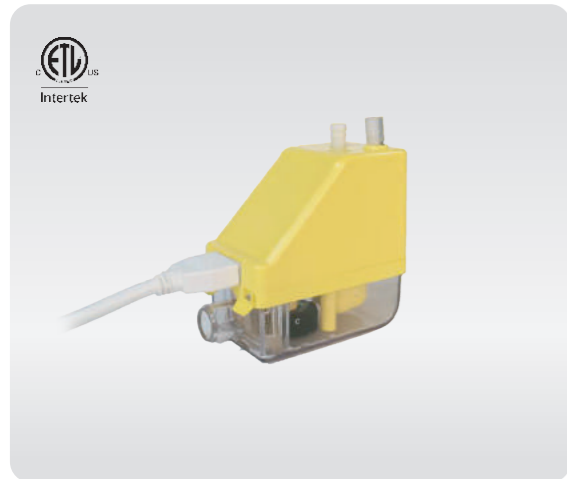
- Max.flow 22L/h @ 0 head
- Sound level <19 dB(A) @ 1m
- Max head 20m
- Max.unit output 28kw / 95,550Btu/h



MUTE TANK-20

- Max.flow 20L/h @ 0 head
- Sound level <19 dB(A) @ 1m
- Max head 20m
- Max.unit output 28kw / 95,550Btu/h

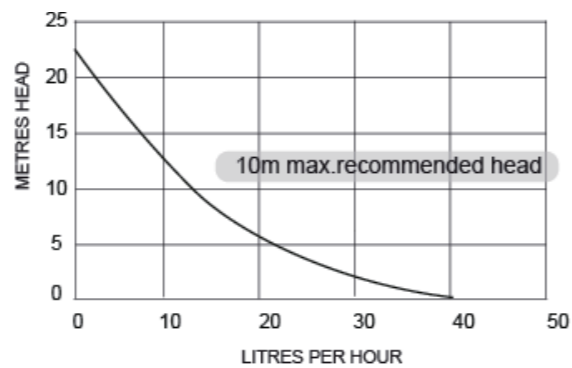




MUTE CORNER-40

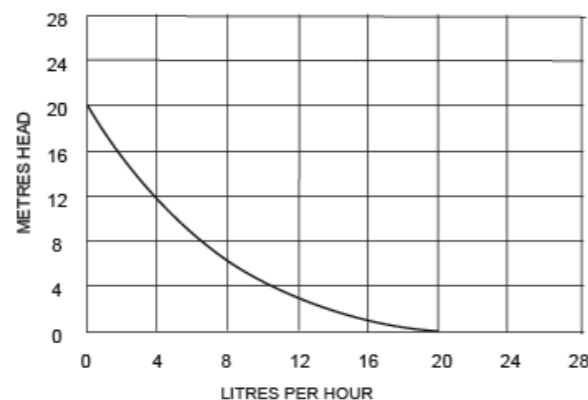
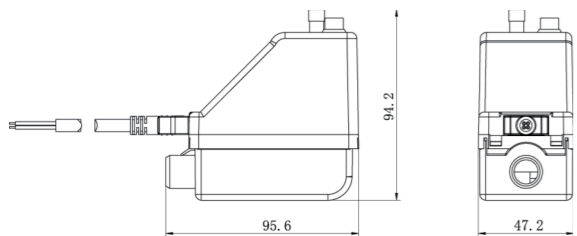
- Max.flow 40L/h @ 0 head
- Sound level <19 dB(A) @ 1m
- Max head 20m
- Max.unit output 46kw / 157,000Btu/h

Technical Data	
Power supply	100-240V AC 50/60Hz
Max.water temperature	70°C
Discharge tube	6mmID
Class	II appliance
Safety switch	3A Normally closed
Tank capacity	65ml
Rated	Continuous
Fully potted	√



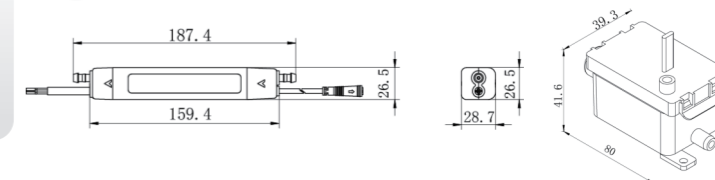
MUTE CORNER-20

- Max.flow 20L/h @ 0 head
- Sound level <19 dB(A) @ 1m
- Max head 20m
- Max.unit output 28kw / 95,550Btu/h

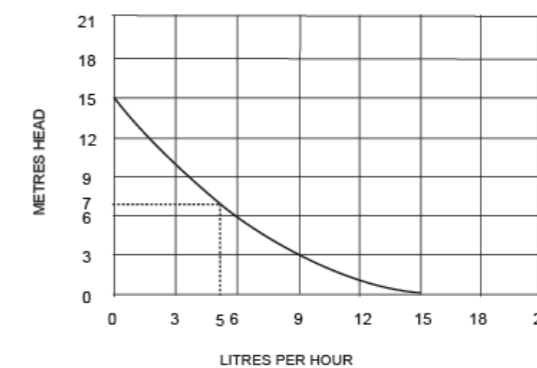


MUTE SLIM

- Max.flow 15L/h
- Sound level <19 dB(A) @ 1m
- Max head 20m



Technical Data	
Power supply	100-240V AC 50/60Hz
Max.unit output	28kw / 95,550Btu/h
Max.water temperature	70°C
Discharge tube	6mmID
Class	II appliance
Safety switch	3A Normally closed
Tank capacity	230ml
Rated	Continuous
Fully potted	√

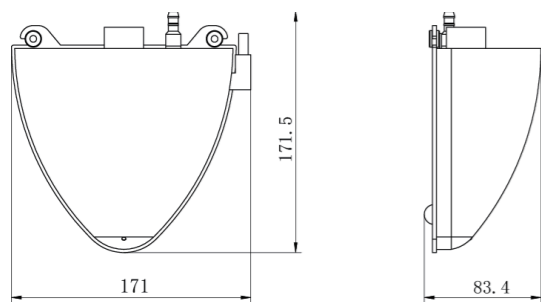
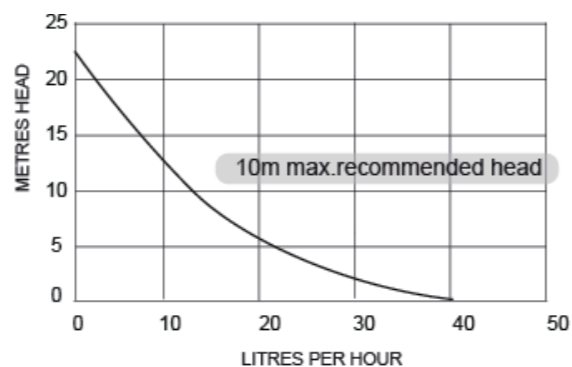




HEART BOX-40

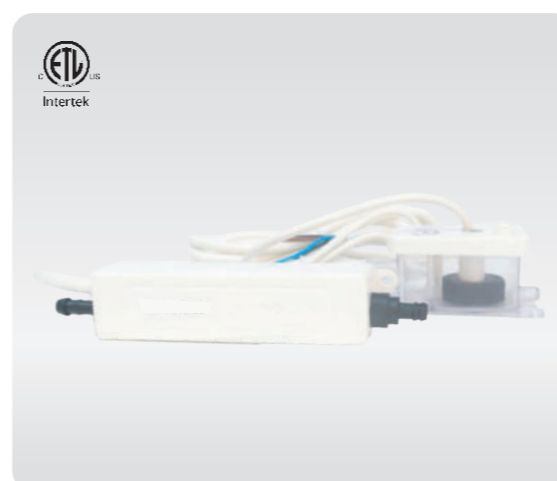
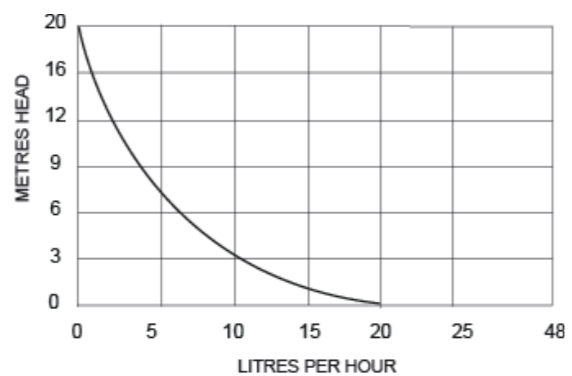
- Max.flow 40L/h @ 0 head
- Sound level <19 dB(A) @ 1m
- Max head 20m
- Max.unit output 46kw / 157,000Btu/h

Technical Data	
Power supply	100-240V AC 50/60Hz
Max.water temperature	70°C
Discharge tube	6mmID
Class	II appliance
Safety switch	3A Normally closed
Tank capacity	300ml
Rated	Continuous
Fully potted	✓



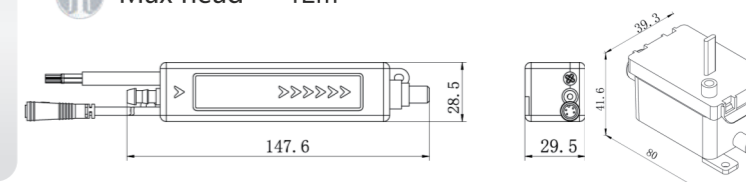
HEART BOX-20

- Max.flow 20L/h @ 0 head
- Sound level <19 dB(A) @ 1m
- Max head 20m
- Max.unit output 28kw / 95,550Btu/h

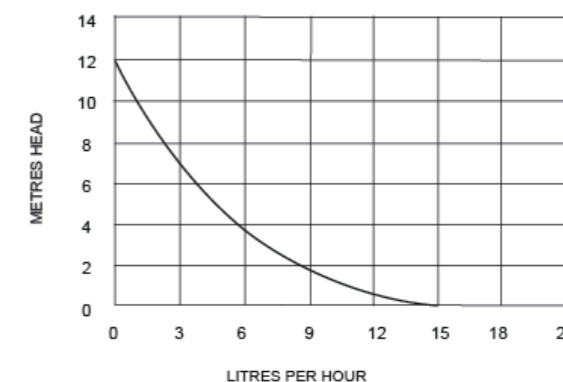


SLIM BOX

- Max.flow 15L/h @ 0 head
- Sound level <19 dB(A) @ 1m
- Max head 12m

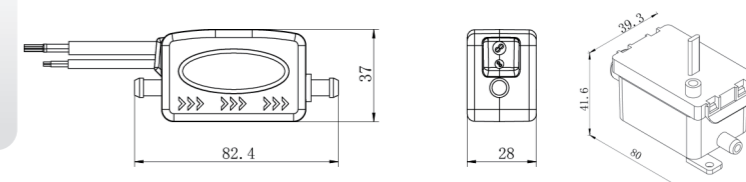


Technical Data	
Power supply	230V 50/60Hz / 115V 60Hz
Max.suction lift	2m
Max.unit output	16kw / 54,600Btu/h
Safety switch	3A Normally closed
Max.water temperature	40°C
Discharge tube	6mmID
Class	II appliance
Rated	Non continuous
IP Protection	IPX5
Thermal protection	✓
Fully potted	✓

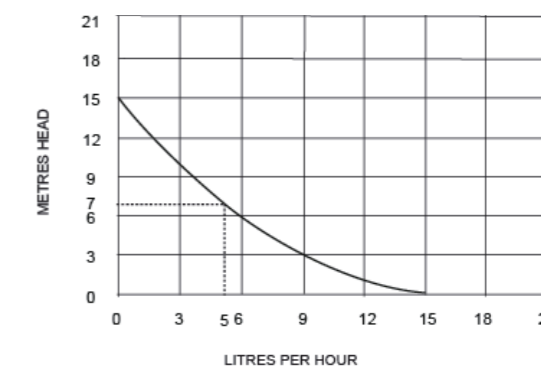


EASY BOX

- Max.flow 15L/h @ 0 head
- Sound level <19 dB(A) @ 1m
- Max head 12m



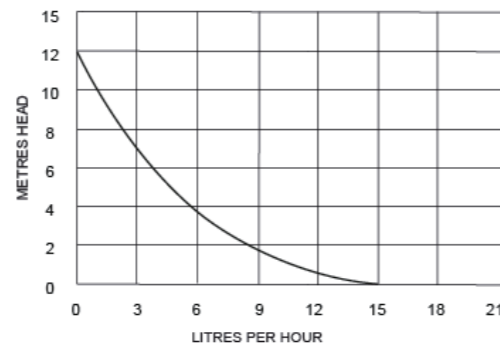
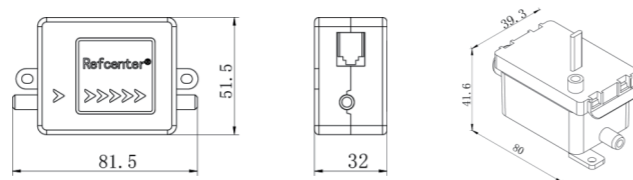
Technical Data	
Power supply	230V 50/60Hz / 115V 60Hz
Max.unit output	16kw / 54,600Btu/h
Safety switch	3A Normally closed
Max.water temperature	40°C
Tank capacity	40ml
Discharge tube	6mmID
Class	II appliance
Rated	Non continuous
IP Protection	IPX5
Thermal protection	✓
Fully potted	✓





MINI BOX

- Max.flow 15L/h @ 0 head
- Sound level <19 dB(A) @ 1m
- Max head 12m



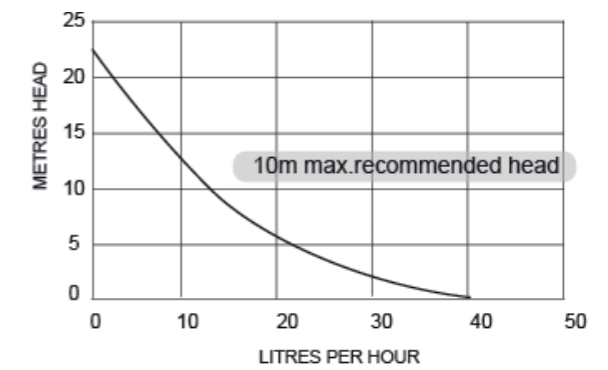
Technical Data	
Power supply	230V 50/60Hz / 115V 60Hz
Max.unit output	16kw / 54,600Btu/h
Safety switch	3A Normally closed
Max.water temperature	40°C
Tank capacity	40ml
Discharge tube	6mmID
Class	II appliance
Rated	Non continuous
IP Protection	IPX1
Thermal protection	✓
Fully potted	✓



M P C -40

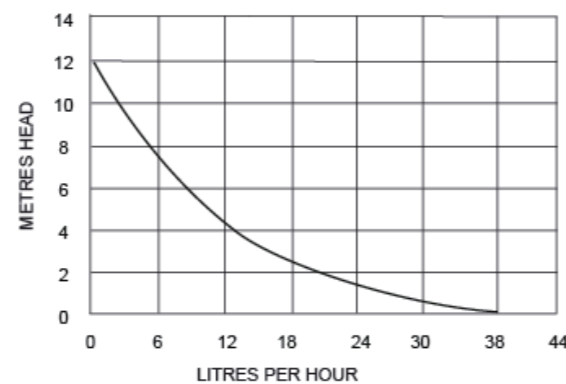
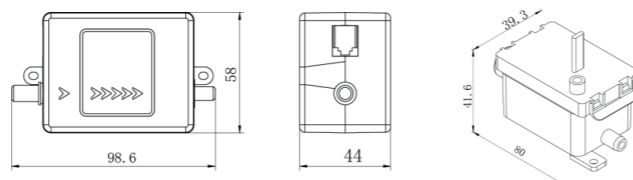
- Max.flow 40L/h @ 0 head
- Sound level <19 dB(A) @ 1m
- Max head 20m
- Max.unit output 46kw / 157,000Btu/h

Technical Data	
Power supply	100-240V AC 50/60Hz
Max.water temperature	70°C
Discharge tube	6mmID
Class	II appliance
Safety switch	3A Normally closed
Tank capacity	230ml
Rated	Continuous
Fully potted	✓

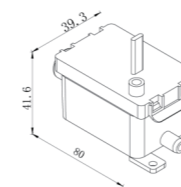
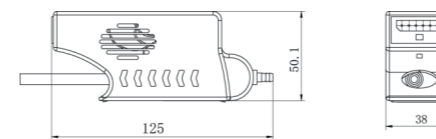


MAXI BOX

- Max.flow 38L/h @ 0 head
- Sound level <21 dB(A) @ 1m
- Max head 12m

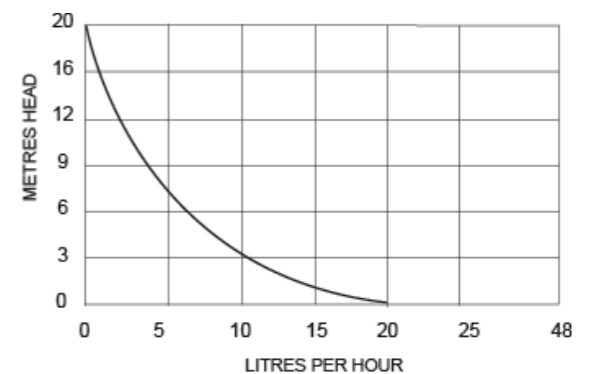


Technical Data	
Power supply	230V 50/60Hz / 115V 60Hz
Max.unit output	46kw / 157,000Btu/h
Safety switch	3A Normally closed
Max.water temperature	40°C
Tank capacity	40ml
Discharge tube	6mmID
Class	II appliance
Rated	Non continuous
IP Protection	IPX1
Thermal protection	✓
Fully potted	✓



M P C -20

- Max.flow 20L/h @ 0 head
- Sound level <19 dB(A) @ 1m
- Max head 20m
- Max.unit output 28kw / 95,550Btu/h



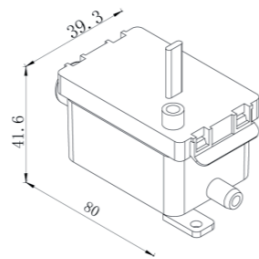
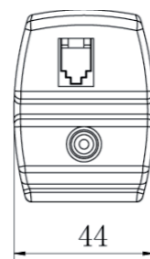
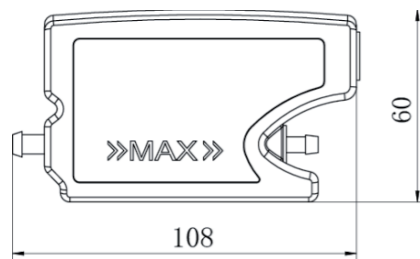
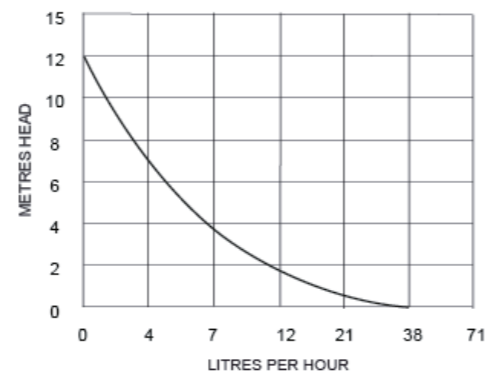


MAX

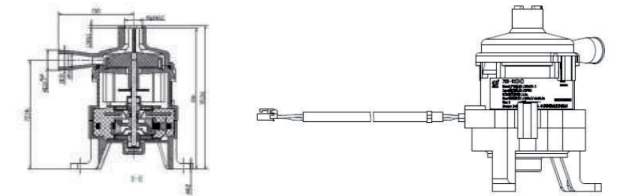
- Max.flow 38L/h @ 0 head
- Sound level <21 dB(A) @ 1m
- Max head 12m

Technical Data

Power supply	230V 50/60Hz / 115V 60Hz
Max.unit output	46kw / 157,000Btu/h
Safety switch	3A Normally closed
Max.water temperature	40°C
Tank capacity	40ml
Discharge tube	6mmID
Class	II appliance
Rated	Non continuous
IP Protection	IPX1
Thermal protection	✓
Fully potted	✓

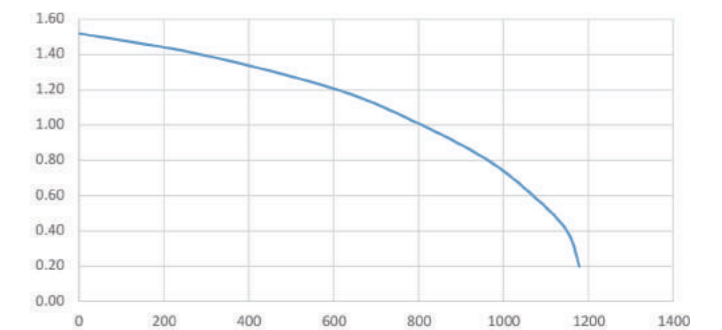


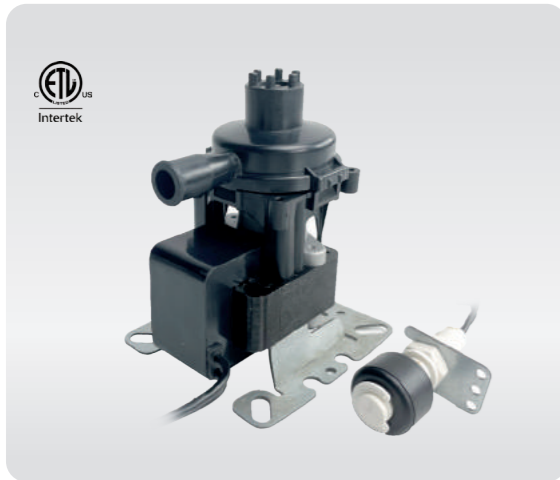
PC-DC



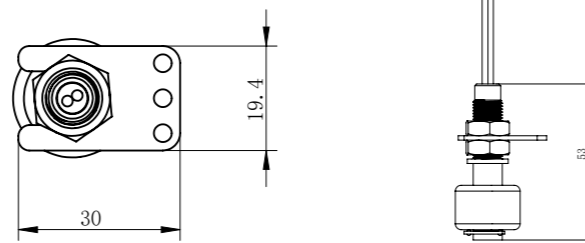
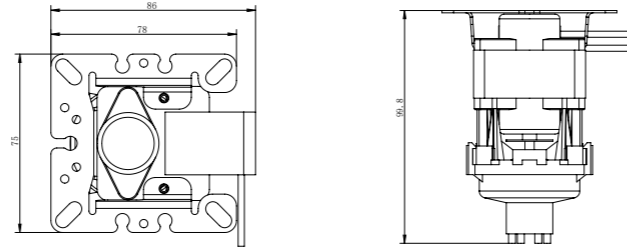
Technical Data

Max. Flow.rate	70L/H
Rated voltage	DC12V(1±10%)
Rated max head	1.2m
Water level	10mm
Input power	2.4W(1±10%)
Rated flow rate	>550ml/min





PC-AC

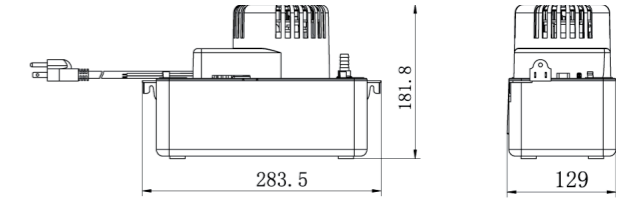


Technical Data	
Max.flow rate.	40L/H
Max.discharge height	95 cm
Power supply	230V-50/60 Hz≤8W
Alarm contact	NC 50 VA resistive- 250V
Thermal protection	impedance protection
Alarm level	18 mm
Sound level at 1 m	≤30 dBA



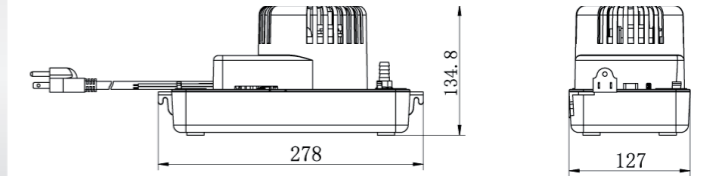
TANK-V

Tank capacity:2.2L



TANK-L

Tank capacity:1.1L



Model	Voltage(V)	Frequency(HZ)	Current(A)	Power(W)	Water flow rate at			Discharge head
					0.3m(L/H)	1.5m(L/H)	2.7m(L/H)	
RTP15WS115V RTP15WS115L	115	60	1.0	60	250	200	150	15'/4.6M
RTP20WS115V RTP20WS115L	115	60	1.5	85	303	265	208	20'/6.1M
RTP22WS115V RTP22WS115L	115	60	1.85	100	550	500	430	22'/6.7M
RTP24WS115V RTP24WS115L	115	60	2.2	110	580	520	470	24'/7.3M
RTP15WS230V RTP15WS230L	230	50/60	0.6/0.45	60/50	260/250	230/200	170/150	15'/4.6M
RTP20WS230V RTP20WS230L	230	50/60	0.7/0.55	85/75	260/303	230/265	180/208	17'/5.2M
RTP22WS230V RTP22WS230L	230	50/60	1.2/1.0	115/100	500/550	460/500	400/430	22'/6.7M
RTP24WS230V RTP24WS230L	230	50/60	1.3/1.1	125/110	530/580	480/520	420/470	24'/7.3M



FLOAT SWITCH-FS2

Characteristic

- Model: FS2
- Max Contact Rating: 50W/70VA
- Max Switch Voltage: AC300V/DC350V
- Min Breakdown Voltage: DC600V
- Max.Switch Current: AC 0.5A/DC 0.7A
- Max Carry Current: 2.5A

Detects clogged A/C condensate drains and shuts off the system. In-line, low voltage condensate overflow shutoff switch. Installs vertically or horizontally in primary drain or can be plugged on auxiliary pans. Pre-wired with 60inch, 20AWG wires. Float Switch model Fs2 can be installed horizontally or vertically, in-line or on the primary pan's auxiliary drain outlet by using the included 3/4" adapter, bushing and cap. It can be installed on a sloping line and does not need to be level or plumb. The switch and cap on the FS2 are easily removed for cleaning and for servicing condensate drain lines.



FLOAT SWITCH-FS3

Characteristic

- Model: FS3
- Max Contact Rating: 50W/70VA
- Max Switch Voltage: AC300V/DC350V
- Min Breakdown Voltage: DC600V
- Max.Switch Current: AC 0.5A/DC 0.7A
- Max Carry Current: 2.5A

Detects clogged A/C condensate drains and shuts off the system. Steel mounting bracket clips firmly over the edge of most drain pans. Slim profile can be installed on primary or auxiliary drain pans. Pre-wired with 60inch, 20AWG wires.

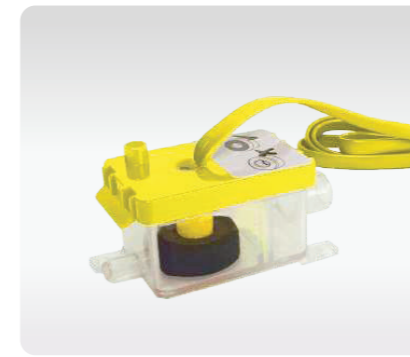


CONDENSATE DRAIN LINE CLEANERS

Characteristic

DrainGun for A/C Condensate Lines
Co₂ Cartridges, pack of 6

To help make condensate drain line cleaning faster and easier. The Drain Gun packs cleaning power into a small, lightweight package. This prevents the need for carrying heavy air or nitrogen tanks



INLINE RESERVIOR

FEATURES

- Assembled inline reservoir could include
- lid & sensor cable
 - float
 - filter
 - reservoir



ANTI-SIPHON JOINT

Characteristic

Prevent siphon; suitable for pump MUTE series



MAGNETIC FLOAT

Characteristic

Compatible with all most pumps



INLET FILTER

Characteristic

Prevent dirt entering the pump directly



INLET HOSE

Characteristic

Length: as per request



PLASTIC TIE

Characteristic

Clips onto the fixed rail inside ducts



VINYL TUBING

Characteristic

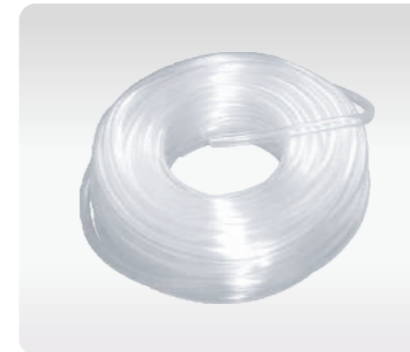
Flexible, durable and non toxic - we have the most extensive range on the market.



REDUCING CONNECTOR

Characteristic

Unidirectional adaptors/Straight Connectors



TRANSPARENT CONDENSATION PIPE

Code	Article
35CF101	DIA.6/9
35CF102	DIA.10/14
35CF103	DIA.15/20
35CF104	DIA.25/31

- 6/25/30/50 meter per roll
- Great resistance to the atmospheric agents
- The tube stands temperatures from -10 to 60
- We can produce the sizes and length according to the requirement from the customers



CONDENSATION DRAIN PIPE

Code	Article
31CF301	D16
31CF302	D20
31CF303	D19
31CF304	D25
31CF305	D12

We can produce the sizes according to the requirement from the customers 20 or 25 meter per roll.



PVC RE-INFORCED PIPE

Code	OD (mm)	ID (mm)	Wall (mm)	Colour
81CF101	16	13	2	white
81CF102	20	16	2	white
81CF103	25	20	2	white
81CF104	32	28	2	white
81CF105	40	36	2	white
81CF201	16	13	2	Grey
81CF202	20	16	2	Grey
81CF203	25	20	2	Grey
81CF204	32	28	2	Grey
81CF205	40	36	2	Grey

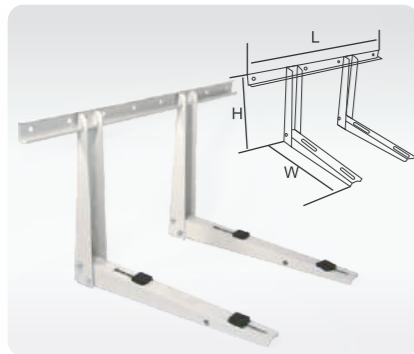
We can produce the sizes according to the requirement from the customers 25 meter per roll.



CORRUGATED PIPE

Code	Article
31CF101	Dia.16&18 single layer PE
31CF102	Dia.18&20 single layer PE
31CF103	Dia.16&16 / Dia. 18&18 single layer PE
31CF104	Dia.18&18 / Dia. 20&20 single layer PE
31CF105	Dia.16&18 Double layer PE
31CF106	Dia.18&20 Double layer PE
31CF107	Dia.16&16/Dia. 18/18 double layer PE
31CF108	Dia.18&18 / Dia.20/20 double layer PE

- Polyethylene of low density ivory colour or white colour Stretches of 0.5 meter or 1 meter
- With a male/female sleeve for 101;102;105;106
- With a male /male and female/ female sleeve for 103;104;107;108
- Packed in single carton in rolls of 6m,8m,15m,50m



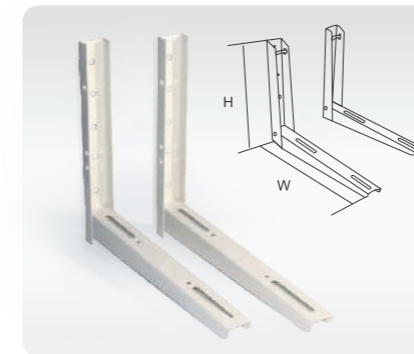
ACB-A

FEATURES

- Strong secure support
- Galvanized steel
- Includes level for convenience



Code	Article
ACB-A01	450X560X850(2.0mm)
ACB-A02	450X600X850(2.0mm)



ACB-E

FEATURES

- Strong secure support
- Galvanized steel
- Wall fixing screws can be included also

Code	Article
ACB-E01	500x400x50(2.0mm)
ACB-E02	500x450x50(2.0mm)
ACB-E03	500x500x50(2.0mm)
ACB-E04	500x550x50(2.0mm)
ACB-E05	450x450x50(1.5mm)
ACB-E06	450x500x50(1.5mm)
ACB-E07	400x400x50(1.5mm)
ACB-E08	400x450x50(1.5mm)
ACB-E09	400x500x50(1.5mm)



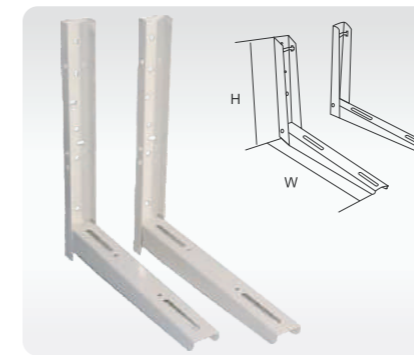
ACB-B

FEATURES

- Strong secure support
- Galvanized steel
- Wall fixing screws can be included also



Code	Article
ACB-B01	350X420X800(1.5mm)
ACB-B02	350X450X800(1.5mm)
ACB-B03	350X550X800(1.8mm)
ACB-B04	390X420X800(1.5mm)
ACB-B05	390X550X800(1.8mm)
ACB-B06	450X550X800(1.8mm)



ACB-F

FEATURES

- Strong secure support
- Galvanized steel
- Wall fixing screws can be included also

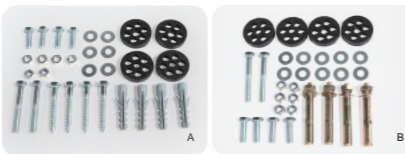
Code	Article
ACB-F01	500X400X60(1.5mm)
ACB-F02	500X450X60(1.5mm)
ACB-F03	500X500X60(1.5mm)
ACB-F04	500X600X60(1.8mm)
ACB-F05	1000X600X60(3.0mm)



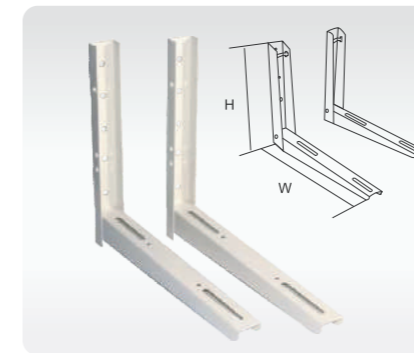
ACB-C

FEATURES

- Strong secure support
- Galvanized steel
- Wall fixing screws can be included also



Code	Article
ACB-C01	390x450x50(1.5mm)
ACB-C02	390x500x50(1.5mm)
ACB-C03	450x550x50(2.0mm)



ACB-F2

FEATURES

- Strong secure support
- Galvanized steel
- Wall fixing screws can be included also

Code	Article
ACB-F201	500X400X50(1.5mm)
ACB-F202	500X450X50(1.5mm)
ACB-F203	500X500X50(1.5mm)
ACB-F204	500X600X50(1.8mm)

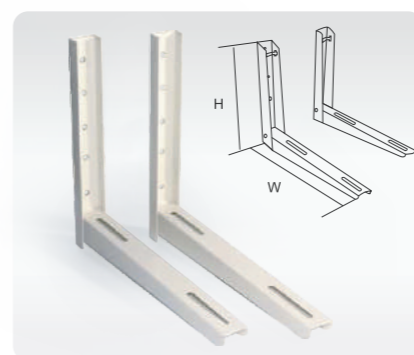


ACB-D

FEATURES

- Painted in ivory epoxy poliester
- Thickness 2mm
- Combines with antivibrator Sg40 (51CF201) allows leveling of gradient of sloped surface

Code	Article
ACB-D01	Small model 400x250mm (2.0mm)
ACB-D02	Medium model 460x250mm (2.0mm)



ACB-G

FEATURES

- Strong secure support
- Galvanized steel
- Wall fixing screws can be included also

Code	Article
ACB-G01	500X400X60+(1.5mm)
ACB-G02	500X450X60+(1.5mm)
ACB-G03	500X500X60+(1.5mm)
ACB-G04	500X600X60+(1.8mm)



21CF74

FEATURES

Material: Cold Press Steel Galvanized Steel
Conver: Powder Coated
Accessories: All connecting and installation bolts, rubber pads and level liquids.

Code	Article		
	H	W	L
21CF741	250	450	800
21CF742	250	550	800



ACR-D

FEATURES

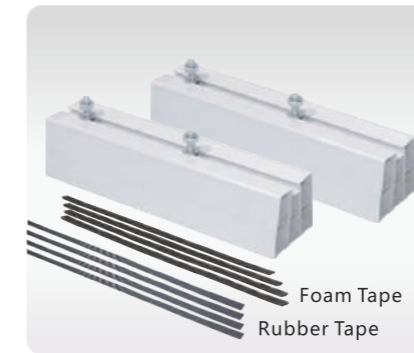
Model	Applicable Scope
ACR-D01	7500Btu-24000Btu A/C



ACB-J

FEATURES

Code	Article
ACB-J01	380X400X850
ACB-J02	480X400X850
ACB-J03	550x420x1000
ACB-J04	600x500x1000

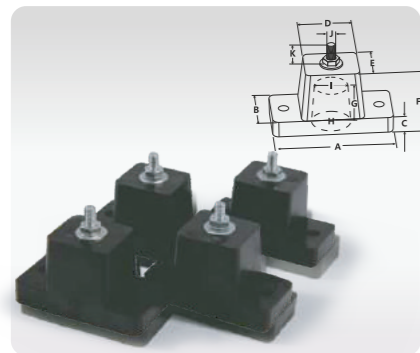


FLOOR SUPPORT-1

FEATURES

- Hard PVC color black or ivory
- Allowable load up to 140kg per foot
- Includes: 2 screws M10*32
2 nuts M10
2 washers M10
- Could be with Foam Tape or rubber

Code	Article
22CF101	Length350mm black
22CF102	Length450mm black
22CF103	Length1000mm black
22CF104	Length350mm Ivory
22CF105	Length450mm Ivory
22CF106	Length1000mm Ivory



ACR-A

FEATURES

Model	A	B	C	D	E	F	G	H	I	J	K	Applicable Scope
ACR-A	95	47	16	47	41	40	32	35	30	8	20	7500Btu-24000Btu A/C



FLOOR SUPPORT-2A

FEATURES

- Allowable load up to 140kg
- Light weight, easy storage and good vibration and shock - absorption

Code	Article
22CF202A	Length400mm Ivory



ACR-C

FEATURES

Model	Applicable Scope
ACR-C01	7500Btu-24000Btu A/C



FLOOR SUPPORT-2B

FEATURES

- Allowable load up to 140kg
- Light weight, easy storage and good vibration and shock - absorption

Code	Article
22CF202B	Length420mm Ivory

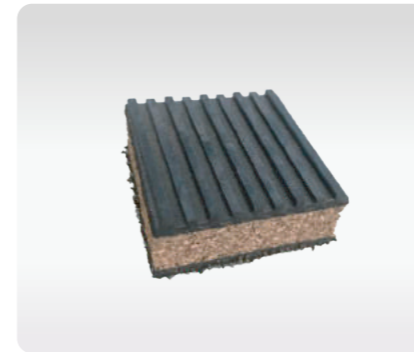


FLOOR SUPPORT-3

FEATURES

- Allowable load up to 140kg
- Light weight, easy storage and good vibration and shock - absorption

Code	Article
22CF301	Length350mm black
22CF302	Length450mm black
22CF303	Length1000mm black
22CF304	Length350mm Ivory
22CF305	Length450mm Ivory
22CF306	Length1000mm Ivory



Rubber/Cork Anti-Vibration Pad

FEATURES

Ideal for air conditioners, compressors, cooling towers, presses, machines, etc High quality elastomeric oil resistant padding.The rubber pads are corrugated on both sides The cork is laminated between two corrugated pads.

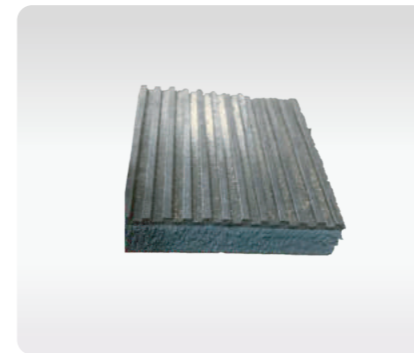
Code	Article
22CF501	50*50*22.3mm
22CF502	75*75*22.3mm
22CF503	100*100*22.3mm
22CF504	150*150*22.3mm
22CF505	300*300*22.3mm
22CF506	450*450*22.3mm



FLOOR SUPPORT-4A

FEATURES

Code	Article
22CF401A	10",250mm*160mm*90mm
22CF402A	16",400mm*160mm*90mm
22CF403A	24",600mm*160mm*90mm
22CF404A	40",1000mm*160mm*90mm
22CF405A	18",450mm*160mm*90mm



EVA Anti-Vibration Pad

FEATURES

The EVA Pad was tested against other pads at four different vibration settings. It is not affected by oils or chemicals that can break down cork and is much more effective at vibration dampening than solid rubber.

Code	Article
22CF601	50*50*22.3mm
22CF602	75*75*22.3mm
22CF603	100*100*22.3mm
22CF604	150*150*22.3mm
22CF605	300*300*22.3mm
22CF606	450*450*22.3mm



FLOOR SUPPORT-4B

FEATURES

Code	Article
22CF401B	250mm*130mm*50mm
22CF402B	400mm*130mm*50mm
22CF403B	600mm*160mm*95mm
22CF404B	1000mm*160mm*95mm



FLOOR SUPPORT-4C

FEATURES

Code	Article
22CF401C	250mm*180mm*95mm
22CF402C	400mm*180mm*95mm
22CF403C	600mm*180mm*95mm
22CF404C	1000mm*180mm*95mm
22CF405C	250mm*130mm*50mm
22CF406C	400mm*130mm*50mm



AG35/45

FEATURES

Code	Article
51CF101	AG35 M8
51CF102	AG45 M8
51CF101S	AG35S M8



SG40/60

FEATURES

Code	Article
51CF201	SG40 M8
51CF202	SG60 M10



AGB35/45

FEATURES

Code	Article
51CF301	AGB35 M8
51CF302	AGB45 M8



AA30/40

FEATURES

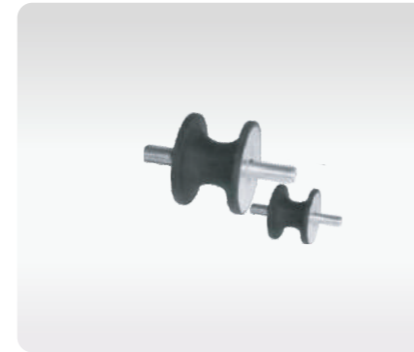
Code	Article
51CF401	AA30 MM 30*20
51CF402	AA40 MM 40*30
51CF403	AA40 MM 40*40



S30

FEATURES

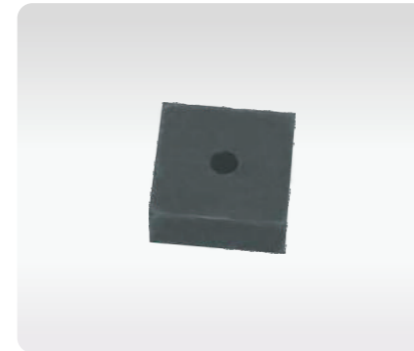
Code	Article
51CF501	S30 35x20



AT

FEATURES

Code	Article
51CF601	AT series



RW01

FEATURES

Code	Article
19CF1011	50x50x15 with hole
19CF1012	50x50x20 with hole



RW02

FEATURES

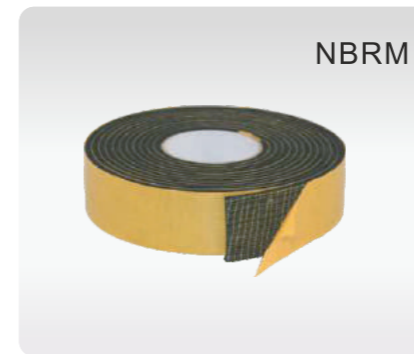
Rubber plug/rubber seal



RW03

FEATURES

Rubber plug/rubber seal



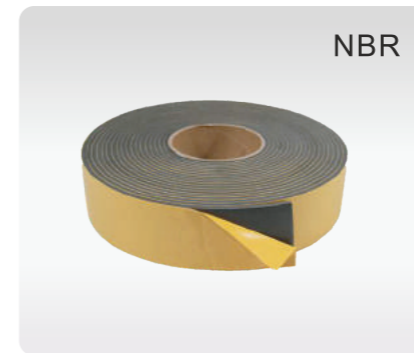
NBRM

INSULATING SELF - ADHESIVE TAPE

With Mesh

FEATURES

Code	Article
14CF101M	rolls of 10mtx50mmx3mm
14CF102M	rolls of 15mtx50mmx3mm
14CF103M	rolls of 25mtx50mmx3mm
14CF104M	rolls of 10mtx100mmx3mm
14CF105M	rolls of 15mtx100mmx3mm
14CF106M	rolls of 25mtx100mmx3mm



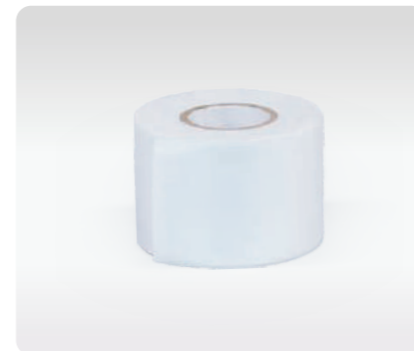
NBR

INSULATING SELF - ADHESIVE TAPE

Without Mesh

FEATURES

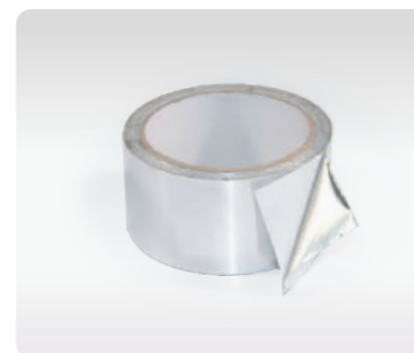
Code	Article
14CF101	rolls of 10mtx50mmx3mm
14CF102	rolls of 15mtx50mmx3mm
14CF103	rolls of 25mtx50mmx3mm
14CF104	rolls of 10mtx100mmx3mm
14CF105	rolls of 15mtx100mmx3mm
14CF106	rolls of 25mtx100mmx3mm



INSULATING NON - ADHESIVE TAPE

FEATURES

75mm x 18m x 0.15mm thick(or close)



ALUMINUM FOIL DUCT TAPE

FEATURES

- . Foil Backing Thickness: 20micron, 30micron, 40micron, 50micron
- . Width: 50mm, 75mm, 100mm
- . Length:30m, 50m, 100m



32CF101

FEATURES

- Box to fit in ABS with white over
- Dimension: 385x128x60mm
- Horizontal outlet
- Can be with elbow



32CF108

FEATURES

- Box to fit in ABS with black cover
- Including screw kit

- 400x180x60mm
- Horizontal outlet



32CF102 & 32CF103

FEATURES

- Box to fit in ABS with white over
- Including screw kit (6 screws)
- Can be with elbow



- 32CF102**
- 428x128x70mm
 - Horizontal outlet



- 32CF103**
- 428x128x70mm
 - Vertical outlet

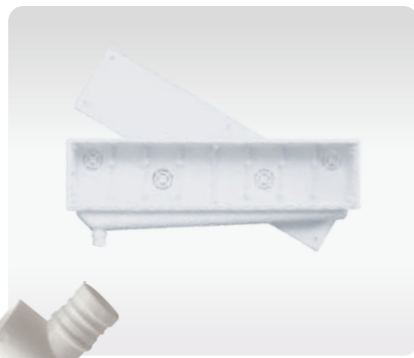


32CF109

FEATURES

- Box to fit in ABS with black cover
- Including screw kit

- 430x210x60mm
- Vertical outlet



32CF104 & 32CF105

FEATURES

- Box to fit in ABS with white over
- Including screw kit (6 screws)
- Can be with elbow



- 32CF104**
- 428x105x52mm
 - Horizontal outlet



- 32CF105**
- 428x105x52mm
 - Vertical outlet



32CF106 & 32CF107

FEATURES

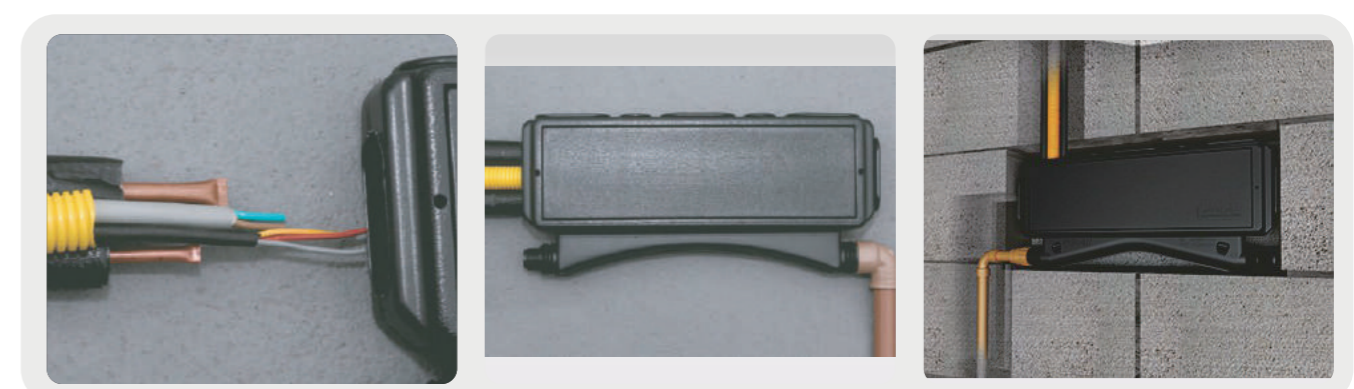
- Box to fit in ABS with white over
- Including screw kit (6 screws)
- Can be with elbow

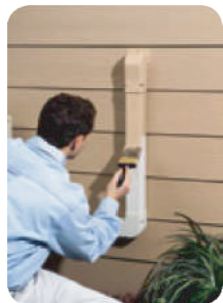
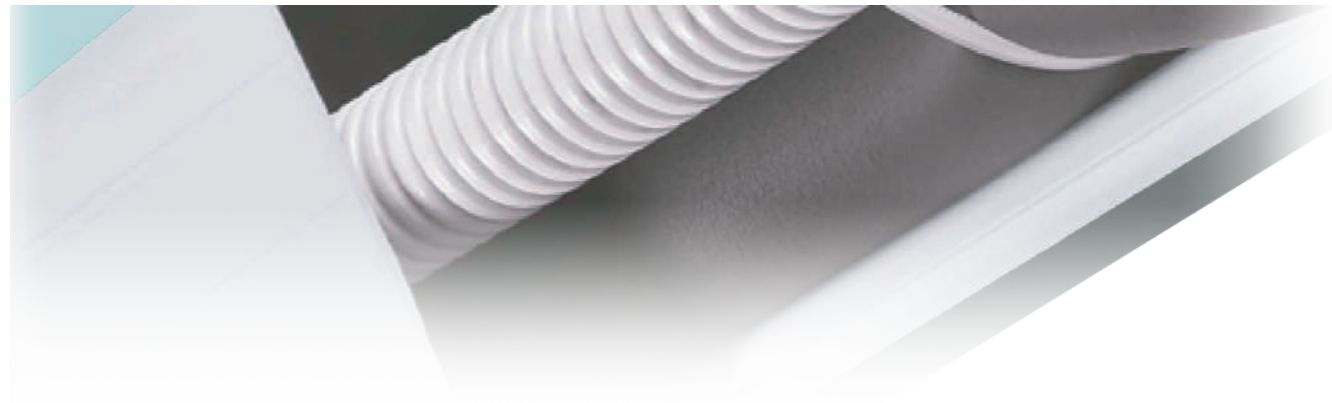


- 32CF106**
- 485x128x65mm
 - Horizontal outlet



- 32CF107**
- 485x128x65mm
 - Indirect elbow





STRAIGHT DUCT

FEATURES

CATALOG NO.	MATERIAL	SIZE
SD-01	PVC	75*65
SD-02	PVC	100*65
SD-03	PVC	130*90
SD-04	PVC	160*120



FLEX JOINT

FEATURES

CATALOG NO.	MATERIAL	SIZE
FJ-01	PE	75*65
FJ-02	PE	100*65
FJ-03	PE	130*90
FJ-04	PE	160*120



90° FLAT ELBOW

FEATURES

CATALOG NO.	MATERIAL	SIZE
FE-01	ABS	75*65
FE-02	ABS	100*65
FE-03	ABS	130*90
FE-04	ABS	160*120



DUCT END

FEATURES

CATALOG NO.	MATERIAL	SIZE
DE-01	ABS	75*65
DE-02	ABS	100*65
DE-03	ABS	130*90



90° ELBOW VERTICAL

FEATURES

CATALOG NO.	MATERIAL	SIZE
VE-01	ABS	75*65
VE-02	ABS	100*65
VE-03	ABS	130*90
VE-04	ABS	160*120



UNION COUPLING

FEATURES

CATALOG NO.	MATERIAL	SIZE
UC-01	ABS	75*65
UC-02	ABS	100*65
UC-03	ABS	130*90
UC-04	ABS	160*120



T JOINT

FEATURES

CATALOG NO.	MATERIAL	SIZE
TJ-01	ABS	100*65
TJ-02	ABS	130*90
TJ-03	ABS	160*120



SOFFIT FITTINGS

FEATURES

CATALOG NO.	MATERIAL	SIZE
SF-01	ABS	75*65
SF-02	ABS	100*65
SF-03	ABS	130*90



WALL PENETRATION

FEATURES

CATALOG NO.	MATERIAL	SIZE
WP-01	ABS	75*65
WP-02	ABS	100*65
WP-03	ABS	130*90
WP-04	ABS	160*120



SINGLE STAGE VACUUM PUMP

Model	SVP-2		SVP-3		SVP-4		SVP-6		SVP-8		SVP-10		SVP-12	
Frequency (Hz)	50	60	50	60	50	60	50	60	50	60	50	60	50	60
Flow Rate (CFM) (l/min)	1.5	1.8	2.5	3.0	3.0	3.6	4.5	5.5	6.5	7.5	8.0	9.5	10	12
	42	50	70	85	85	100	128	156	185	212	226	270	283	340
Ultimate Vacuum (micron)	150		150		150		150		150		150		150	
Motor Power (HP)	1/4		1/4		1/3		1/3		1/2		3/4		1	
Oil Capacity (ml)	430		400		400		450		480		730		730	
Net Weight (kg)	4.6		5.7		5.8		8.2		8.3		11		11	
Dimensions (mm)	290x125x235		290x125x235		290x125x235		325x135x250		325x135x250		360x155x270		360x155x270	



RECOVERY MACHINE

- Economical recovery with 1/2HP, oil-less compressor
- Suitable for all commonly used refrigerants including R410A
- ARI & CE certification approved
- 80% overfilling protection
- The unit will automatically stop when the weight of recovered refrigerant reaches 80% capacity of the tank.
- Low pressure protection
- The unit will automatically stop once the recover is complete, which reduces the need to monitor the whole process.
- Oil separator device
- Purification and recycling of the refrigerants.



Filter drier



10cm(4") Connection hose

DUAL STAGE VACUUM PUMP

Model	2SVP-2		2SVP-4		2SVP-6		2SVP-8		2SVP-10		2SVP-12	
Frequency	50HZ	60HZ	50HZ	60HZ	50HZ	60HZ	50HZ	60HZ	50HZ	60HZ	50HZ	60HZ
Flow Rate	1.5CFM	1.8CFM	3.5CFM	4.0CFM	4.5CFM	5.0CFM	6.0CFM	7.0CFM	8.0CFM	9.0CFM	10.0CFM	12.0CFM
	42l/min	50l/min	100l/min	114l/min	128l/min	142l/min	170l/min	198l/min	226l/min	254l/min	283l/min	340l/min
Ultimate Vacuum	25micron 3Pa		25micron 3Pa		25micron 3Pa		25micron 3Pa		25micron 3Pa		25micron 3Pa	
Motor Power	1/4HP		1/3HP		1/2HP		3/4HP		1HP		1HP	
Oil Capacity	180ml		360ml		350ml		700ml		600ml		700ml	
Net Weight	6kg		11kg		11.8kg		15kg		15.5kg		16kg	
Dimensions	270x119x216mm		320x134x232mm		320x134x232mm		370x140x250mm		370x140x250mm		390x140x250mm	

Refrigerants	Category III: R12, R134a, R401c, R406A, R500			
	Category IV: R22, R401A, R401B, R402B, R407C, R407D, R408A, R409A, R411A, R411B, R412A, R502, R509			
	Category V: R402A, R404A, R407A, R407B, R410A, R507			
Power Supply	220V/50~60Hz	115V/60Hz	110~220V/50~60Hz	
Motor	1/2 HP			
Motor Speed	1450 rpm@50 Hz		1750 rpm@60 Hz	
Maximal Current Draw Compressor	4A @ 220V		8A @ 100V / 110V	
Automatic safety Shut-Off	Oil - less, Air - cooled, Piston style			
	38.5 bar / 3850 kPa(558 psi)			
Recovery Rate	Category III	Category IV	Category V	
	Vapor	0.23 kg/min	0.25 kg/min	0.26 kg/min
	Liquid	1.57 kg/min	1.81 kg/min	1.85 kg/min
	Push/pull	4.64 kg/min	5.57 kg/min	6.22 kg/min
Operating Temperature	0°C~40°C			
Dimensions (VRR12A)	500mm X 220mm X 340mm			
Weight (VRR12A)	16kg			